



Success Accelerators

[Boost. Your. Productivity.]

An exclusive offering to elevate your Intelligent Data Management Cloud (IDMC) implementation experience

Success Accelerators Highlights for Cloud Integration & Governance

Cloud Integration

- Overview and Walkthrough of Key Features and Functionalities
- Value Accelerator (Expert guidance sessions for (1) Use Case)
- Cloud Native Compute and Dynamic Compute Scaling
- Use Case Validation
- Solution Advisory
- Health Checks
- Improve Efficiency on Consumption and Usage

Cloud Governance & Quality

- Overview and Walkthrough of Key Features and Functionalities
- Business & Functional Focus
- Value Accelerator (Expert guidance sessions for (1) Use Case)
- Use Case Validation
- Solution Advisory
- Health Checks
- Improve Efficiency on Consumption and Usage

125+

Accelerators

Click link to learn more
[Success Accelerators](#)

Success Accelerators

Highlights for Cloud Master Data Management

MDM SaaS

- Overview and Walkthrough of Key Features and Functionalities
- Value Accelerator (Expert guidance sessions for (1) Use Case)
- Use Case Validation
- Solution Advisory
- Health Checks

125+

Accelerators

Click link to learn more
[Success Accelerators](#)

IDMC Platform Setup Accelerators

Common for All IDMC Journeys

01

BASIC SETUP

- [Getting Started with IDMC Platform](#)
- [IDMC Environment Setup Patterns](#)
- [IDMC Architecture and Security](#)
- [IDMC Customer-Managed Runtime Environment Setup](#)
- [IDMC Runtimes - High Availability and Disaster Recovery](#)
- [Fundamentals of Informatica Processing Units and Metering](#)
- [IDMC Platform Monitoring and Operational Insights](#)

02

USER MANAGEMENT & SECURITY

- [IDMC Access Management Best Practices](#)
- [IDMC SAML Integration with Azure AD](#)
- [IDMC SAML Integration with Okta](#)
- [IDMC Secrets Manager and Customer Managed Key](#)

03

CHANGE MANAGEMENT & SOURCE CONTROL

- [IDMC Source Control Integration with GitHub](#)
- [IDMC Source Control Integration with GitLab On-Premise](#)
- [IDMC Source Control Integration with Azure DevOps](#)
- [IDMC Source Control Integration with Bitbucket On-Premise](#)

04

ADVANCED

- [Informatica Processing Units – Consumption Best Practices](#)
- [IDMC Platform Automation with REST APIs](#)
- [Dynamic Compute Scaling - IDMC Advanced Clusters on AWS](#)
- [Dynamic Compute Scaling - IDMC Advanced Clusters on Google Cloud Platform](#)
- [Dynamic Compute Scaling - IDMC Advanced Clusters on Microsoft Azure](#)
- [Dynamic Compute Scaling - IDMC Advanced Clusters with Bring Your Own AKS](#)
- [Dynamic Compute Scaling - IDMC Advanced Clusters with Bring Your Own EKS](#)
- [Cloud Native Compute - IDMC Advanced Serverless on AWS](#)
- [IDMC Secure Agent Health Check](#)

125+

Accelerators

Click link to learn more
[Success Accelerators](#)

Cloud Integration Accelerators

Cloud Data Warehouse and Data Lake Use Cases

01

PLAN

- [Start with IDMC Platform Setup Accelerators](#)
- [Overview of Integration Cloud Services](#)
- [IDMC Parameterization in Data Integration Workflows](#)
- [IDMC Batch Process Flow Orchestration](#)
- [IDMC Agile Development Practices](#)

02

DESIGN

- [IDMC Code Reusability Best Practices](#)
- [IDMC – Building Reusable CDQ Assets In-Flight and At-Rest](#)
- [IDMC Event Driven Architecture](#)
- [IDMC - Consuming Third-Party Data over Web Services in Batch Mode](#)
- [IDMC Dynamic Mapping Tasks](#)

03

IMPLEMENT

- [Cloud Integration Use Case Validation and Adoption Health Check](#)
- [IDMC Cloud Mass Ingestion Databases - Oracle to Snowflake](#)
- [IDMC Cloud Mass Ingestion Applications – Salesforce to Snowflake](#)
- [IDMC Cloud Mass Ingestion Files – Amazon S3 to Snowflake](#)
- [IDMC Cloud Mass Ingestion Streaming – Kafka to Snowflake](#)
- [IDMC – Advanced Pushdown Optimization with Snowflake](#)
- [IDMC – Advanced Pushdown Optimization with SQL Server](#)
- [IDMC – Advanced Pushdown Optimization with Oracle](#)

125+

Accelerators

Click link to learn more
[Success Accelerators](#)

Cloud Integration Accelerators

Application Orchestration and APIs Integration Use Cases

01

PLAN

- [Start with IDMC Platform Setup Accelerators](#)
- [Overview of Integration Cloud Services](#)
- [IDMC – Real-time Process Flow Orchestration](#)
- [IDMC Agile Development Practices](#)

02

DESIGN

- [IDMC Code Reusability Best Practices](#)
- [IDMC Event Driven Architecture](#)
- [IDMC – Creating Data APIs](#)
- [IDMC – Consuming Third-Party Data over Web Services in Real-Time](#)
- [IDMC – Managed API Fundamentals](#)

03

IMPLEMENT

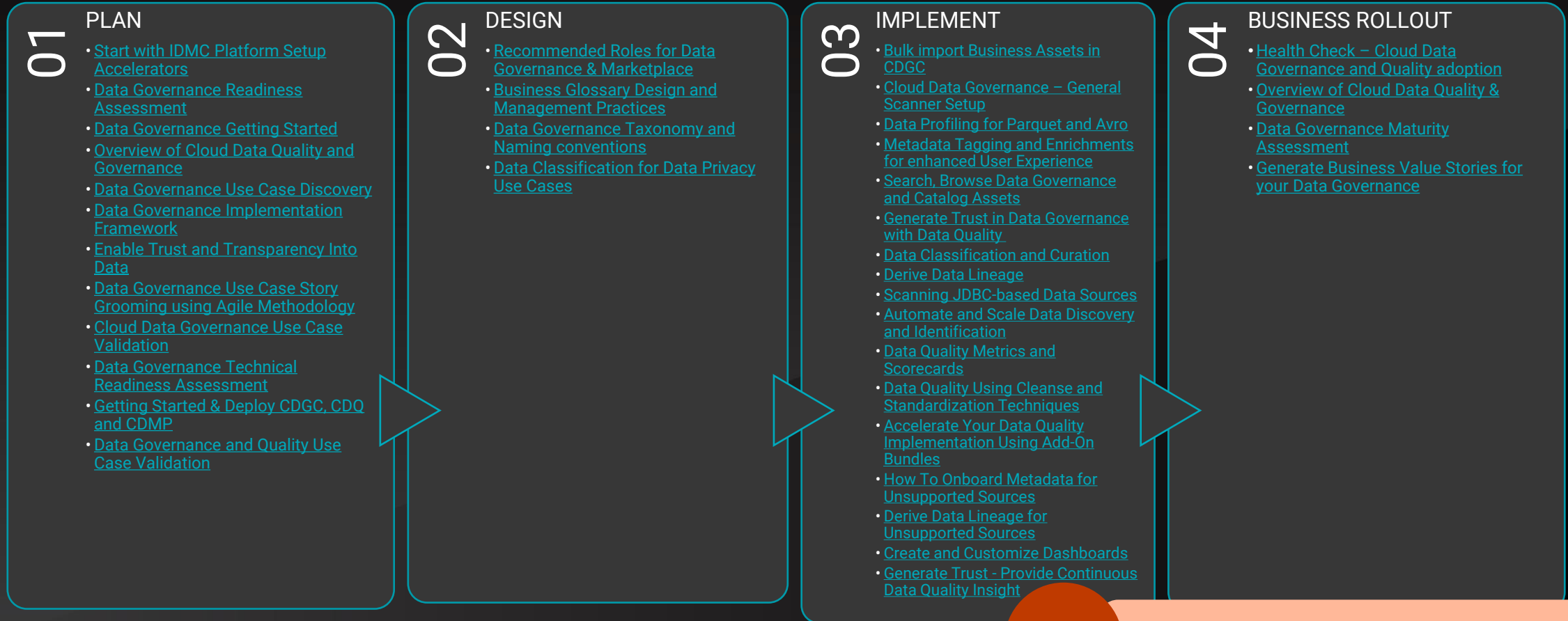
- [Cloud Integration Use Case Validation and Adoption Health Check](#)

125+

Accelerators

Click link to learn more
[Success Accelerators](#)

Cloud Data Quality & Governance Accelerators



125+

Accelerators

Click link to learn more
[Success Accelerators](#)

Data Democratization – Marketplace Accelerators

01 PLAN

- [Start with IDMC Platform Setup Accelerators](#)
- [Data Governance Use Case Discovery](#)
- [Data Democratization for Self Service Analytics](#)
- [Getting Started & Deploy CDGC, CDQ and CDMP](#)

02 DESIGN

- [Recommended Roles for Data Governance & Marketplace](#)
- [Cloud Data Marketplace Administration](#)

03 IMPLEMENT

- [Onboarding Assets from Data Governance to Data Marketplace](#)
- [Bulk import Business Assets in CDGC](#)
- [Data Shopping for Marketplace - Search, Browse, Checkout](#)
- [Automate and Integrate Cloud Data Marketplace With External Systems](#)

04 BUSINESS ROLLOUT

- [Health Check – Cloud Data Governance and Quality adoption](#)
- [Overview of Cloud Data Quality & Governance](#)
- [Data Governance Maturity Assessment](#)
- [Generate Business Value Stories for your Data Governance](#)

125+

Accelerators

Click link to learn more
[Success Accelerators](#)

MDM SaaS Accelerators

01 PLAN

- [Start with IDMC Platform Setup Accelerators](#)
- [Overview of Cloud MDM SaaS](#)
- [Planning for MDM SaaS Implementation](#)
- [Recommended Project Team Structure & Engagement Matrix](#)
- [MDM SaaS Onboarding & Use Case Validation](#)
- [Planning for MDM SaaS Roles & Responsibilities](#)

02 DESIGN

- [Dataflow and Architecture Topology for MDM SaaS](#)
- [Data Quality Business & Technical Concepts](#)
- [Data Modeling Best Practices](#)
- [Hierarchy & Relation in MDM SaaS](#)
- [Design the User Interface](#)
- [Getting Started with Survivorship and Ranking](#)
- [Understanding MDM Workflows](#)
- [Ingress Source Systems to MDM SaaS](#)
- [Exporting and Egress Data Downstream](#)
- [Business Events for Publishing](#)
- [Realtime Public APIs for MDM SaaS](#)
- [Realtime Publishing using Native APIs](#)

03 IMPLEMENT

- [MDM SaaS Environment Health Check](#)
- [CDI and Address Doctor Integration](#)
- [Match and Merge Use Case Validation](#)
- [Overview of using Machine Learning Model & User Training](#)
- [Getting Started with Match Models](#)
- [CDQ Scorecards & Profiling](#)
- [D&B Enrichment using CDI for MDM SaaS](#)
- [Solution Accelerators: Using Industry Specific Extensions for MDM SaaS](#)
- [Solution Accelerators: Using Prebuilt Integration Extensions for MDM SaaS](#)

04 ADVANCED

- [Manage and Migrate Assets](#)
- [Integrating MDM Assets with CDGC](#)
- [MDM SaaS Business Adoption Health Check](#)
- [Understanding Reference 360 with MDM SaaS](#)
- [Integration between MDM SaaS and SAP](#)
- [Using MuleSoft with MDM SaaS](#)
- [Integration Between MDM SaaS and SFDC](#)
- [Snowflake and MDM SaaS Data warehouse](#)

125+

Accelerators

Click link to learn more
[Success Accelerators](#)

Where data comes to

Thank You

